



WATER

LANTERN FESTIVAL

LOS ANGELES

EVENT GUIDE



6.23.24

CONNECT WITH US!

WATERLANTERNFESTIVAL



@WATERLANTERNFESTIVAL



@WATERLANTERNFESTIVAL

EVENT INFO

WHEN

Sunday, June 23, 2024

WHERE

Whittier Narrows Recreation Area
750 S Santa Anita Ave
South El Monte, CA 91733

PARKING

See details on next page

WHAT TO BRING

Event ticket (Printed or digital)
Cash for food trucks and vendors
Blanket/warm clothes

Camping Chair
Camera
Bug Spray

WHAT TO EXPECT

This event combines the magic of friends, family, great food, and a beautiful array of twinkling lanterns on the waterfront. There is something to do for everyone at this beautiful event. You can enjoy various local food trucks, relax while listening to music, check out the local vendors, decorate lanterns, or even play a game of corn hole with your friends.

Water Lantern Festival is an incredible experience where thousands of family, friends, and strangers celebrate life together. Water Lantern Festival brings together individuals from all ages, backgrounds, and walks of life to join in one emotional and memorable night.

As the sun begins to set in the evening sky, the Water Lantern Festival begins to shine as the lanterns are launched onto the water. Watch your unique lantern drift on the water as it joins other lanterns carrying hope, love, happiness, healing, and connection. Reflect on your life, share your dreams, and feel the peace of all those around you as you enjoy the reflection of the lanterns upon the water.



VENUE MAP

PARKING

Parking is located onsite at the venue. Parking will be \$7 per car. Please bring the exact amount in cash to help prevent long lines and keep traffic flowing. Please see map for all parking locations & links below to parking lots.



1 - LEGG LAKE WEST SIDE PARKING LOT

2 - LEGG LAKE NORTH SIDE PARKING LOT

3 - STAGING AREA PARKING LOT

4 - WHITTIER NARROWS AREA D PARKING LOT

5 - WHITTIER DISC GOLF PARKING LOT

6 - LEGG LAKE PARKING LOT

LANTERN LAUNCH

PLEASE NOTE

Please understand that each event is unique and we do our best to ensure a beautiful experience. However, the lantern launch is subject to the weather conditions which may have an impact on the lanterns and their movement upon the water.

SCHEDULE

5:30 PM - 8:00 PM

You can arrive anytime between 5:30 - 8:00 PM. Please arrive before 8:00 PM.

5:30 PM - 8:00 PM

Food Trucks, Entertainment, Lantern Decorating.

8:00 PM - 8:30 PM

Lantern Stories, Meditation, Launch Instructions.

8:30 PM - 9:30 PM

Lantern Launch Window

9:30 PM

Event Ends

DECORATE YOUR LANTERN

1

Decorate your lantern with messages of hope, love, dreams, goals, remembrance, or whatever your heart desires.

2

Push the four rods into each corner on the base of the lantern and slide the paper sleeve over the rods.

3

Place the LED candle in the center of the lantern, but don't turn it on until it's time to launch your lantern. We utilize reusable LED candles to ensure that your lantern remains lit throughout the event. This also ensures that our team is able to find and collect the lanterns following the event.

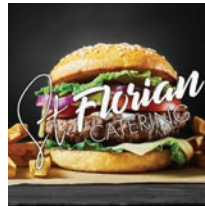
4

Listen for announcements with instructions on launching your lantern on the water during the launch window.

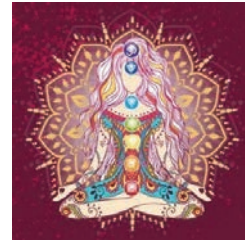
At the appropriate time, our team will provide instructions to begin the lantern launch. The launch window will last approximately one hour, so please don't rush to the water as there will be ample time to launch your lantern.

FOOD & VENDORS

FOOD



VENDORS





Give Water. Change Lives.

1 in 10 people around the world lack access to safe water. Water Lantern Festival is proud to support Water.org to help change this.

Access to safe water improves health, empowers women, enables access to education, increases family income and changes lives.

Water.org has transformed millions of lives around the world. Together we can change even more. Scan the QR code to learn more and give water today.

\$25 helps give one family lasting access to safe water or sanitation at home.



Scan code
with phone



IAN SWELLES

Swelles is an east coast born, west coast based singer-songwriter, blending R&B, soul, and indie rock. Heavily inspired by legends such as the Beatles, Jimi Hendrix, and Stevie Wonder, Swelles hopes to captivate audiences with heartfelt melodies.



SPONSOR



MORE INFO

DONATE

Water Lantern Festival is proud to support Water.org which helps supply clean water to people all over the world.

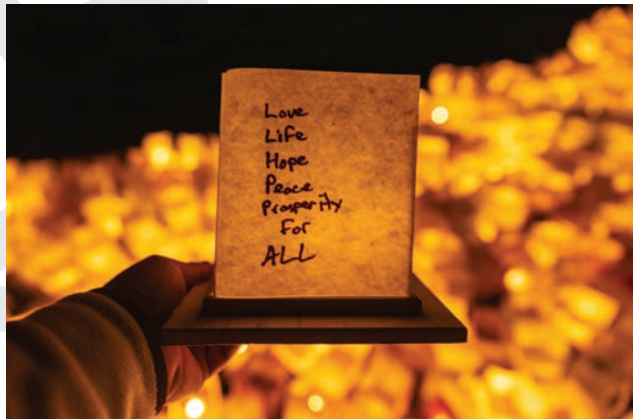
SUSTAINABILITY

Water Lantern Festival cares deeply about our environment and our water resources. Following the event our team will retrieve each lantern and clean-up any trash that may have previously been in or around the water. In addition, each of our lanterns are made from wood and rice paper, making them as environmentally friendly as possible. After the event, please help clean up any trash and leave no trace.



RELEASE WAIVER

By participating in the Water Lantern Festival presented by One World, you agree to the release waiver which can be viewed at <http://www.waterlanternfestival.com/release-waiver.php>. We are not responsible for lost or stolen items. Children should not be left unattended at anytime during the event.



EVENT UPDATES

Be sure to follow the Water Lantern Festival event page on Facebook as this will be the main tool for communication and last minute event updates if necessary.

**We're excited to share the Water Lantern Festival experience with you!
Please remember to be safe, be happy, be kind, and be friendly.**